

JANUARY 2025

THE SOURCE

COUNCIL ON AGING



Live Well. Age Well.

711 Marshall Street, Suite 100
Leavenworth, KS 66048

Phone: 913.684.0777

Fax: 913.684.0779

Transportation: 913.684.0778

IN THIS ISSUE:

- ◆ February COA Trips
- ◆ Financial Resource Workshop
- ◆ Volunteer Income Tax Assistance Program
- ◆ Tax Scam Warning Signs & How to Report
- ◆ COA Programs
- ◆ *Dining with Diabetes* February Series
- ◆ COA Support Groups
- ◆ Medicare General Open Enrollment



Our Programs

- Attendant Support
- Chore Assistance
- Errand & Shopping Support
- Information & Assistance
- Legal Service
- Leisure & Learning Program
- Nutrition Program
- Pets & Loving Seniors Program (PALS)
- Pet2Vet Program
- Senior Health Insurance Counseling
- Social Services
- Support Groups
- Telephone & Visiting Support
- Senior Express Transportation

FEBRUARY COA TRIPS

- FEB 6** **NEGRO LEAGUE BASEBALL MUSEUM, JAZZ MUSEUM & LUNCH**
9:00 am
Lottery Drawing: Sign up by January 9.
Cost: \$19 for transportation & admission. Cost of lunch additional.
- FEB 20** **I-FLY INDOOR SKYDIVING**
8:45 am
BLAST (Bucket List Adventure Series Trips)
Cost: \$115 due at sign-up. Includes lesson, low and high flights, downloadable photos & video, diploma, air show performance, and pizza lunch. Come out of hibernation to enjoy an exhilarating experience! Deadline is February 4. Max of 21 people.
Safety note: not recommended for those with a shoulder injury
- FEB 27** **MYSTERY BREAKFAST**
8:30 am
Lottery Drawing: Sign up by January 30 for drawing on January 31. Cost: \$7 for transportation plus cost of meal.
- MAR 6** **ALBRECHT-KEMPER MUSEUM OF ART**
9:00 am
Lottery drawing: Sign up by February 10.
Cost: \$54 includes transportation, one-hour guided tour, café box lunch, and a hands-on art project.

Pick up a Leisure & Learning Trip Card at the COA.

Financial Resource WORKSHOP

Join the COA and community partners for a finance workshop to learn tips on how to make your money work harder for you and get information on programs that can help stretch your budget. Lunch will be provided.

JANUARY 10, 2025

9am-3pm

Limited to 35 participants. Sign up today!

TOPICS INCLUDE:

- **Taking Control of Your Finances**, Phillip Parsons, *Frontier Community Credit Union*
- **Money 101**, Cyndi Elias, *Catholic Charities*
- **Getting to Know Your Local Area Agency on Aging**, Rik VanDyke, *Wyandotte/Leavenworth Area Agency on Aging*
- **Medicaid, Medicare Saving Program & Home and Community Based Services**, J. Scott O'Mara, *Kansas Department of Health and Environment*
- **Eating Right When Money is Tight**, Anita Muniz-GrandPre, *K-State Research & Extension Office*
- **Understanding Your Taxes & What You Need to Know Before Filing**, Dan Senterfitt, *COA VITA Program*
- **Everygy Empowering Communities: Utility Assistance and Energy Efficiency Programs**, Alison Lee & Jada Cason Ballance, *Everygy*

COUNCIL ON AGING



711 Marshall St., Suite 100
Leavenworth, KS 66048



seniors1st@leavenworthcounty.gov



913.684.0777



www.leavenworthcounty.gov/COA

FEBRUARY 3RD - MARCH 31ST

VOLUNTEER INCOME TAX ASSISTANCE VITA



The Leavenworth County Council on Aging VITA Program is gearing up for the 2024 Tax Season.

VITA Tax preparation is provided by the Leavenworth County Council on Aging to qualifying seniors free of charge. To qualify, you must:

- ⇒ be a Leavenworth County resident,
- ⇒ be 60 years or older, or disabled and
- ⇒ have an income less than \$67,000 with no farm or rental income.
- ⇒ Other restrictions may apply.

About the VITA Program

The IRS's Volunteer Income Tax Assistance (VITA) program offers free basic tax return preparation to qualified individuals. The VITA program has operated for over 50 years, and specializes in questions about pensions and retirement-related issues unique to seniors.

VITA services are not only free, they are also a reliable and trusted source for preparing tax returns. All VITA volunteers who prepare returns must take and pass tax law training that meets or exceeds IRS standards. This training includes maintaining the privacy and confidentiality of all taxpayer information.

Starting January 21, 2025, call Dena at 913.364.5204 to schedule your appointment! Please be patient as our phone line will have a high volume of calls. Our VITA Team is looking forward to assisting you this tax season!

VITA Program Site Coordinator: Jessica Pontbriant,
913.684.0733, jpontbriant@leavenworthcounty.gov

The COA will offer tax services by appointment at the following locations:

Council on Aging, Leavenworth
Basehor Library
Linwood Library
Tonganoxie Library
Easton



You can avoid falling for a tax scam. Know what to watch out for and how the IRS contacts you.

TAX SCAM WARNING SIGNS

Scammers mislead you about tax refunds, credits and payments. They pressure you for personal, financial or employment information or money. IRS impersonators try to look like us. Watch out for:

A Big Payday - If it sounds too good to be true, it probably is. Bad tax advice on social media may convince you to lie on tax forms or mislead you about credits you can claim.

Demands or Threats - Impersonators want you to pay "now or else." They threaten arrest or deportation. They don't let you question or appeal the amount of tax you owe.

Website Links - Odd or misspelled web links can take you to harmful sites instead of IRS.gov.

The IRS wants you to understand how and when the IRS contacts taxpayers, and help you determine whether a contact you may have received is truly from an IRS employee.

The IRS initiates most contacts through regular mail delivered by the United States Postal Service.

However, there are circumstances in which the IRS will call or come to a home or business. These include when a taxpayer has an overdue tax bill, a delinquent (unfiled) tax return or has not made an employment tax deposit. An IRS employee may also view assets or tour a business as part of a collection investigation, an audit, or an ongoing criminal investigation.

Even then, taxpayers will generally first receive several notices and letters from the IRS in the mail.

How To Report Scams or Fraud: Taxpayers can report by phone and online.

- Report impersonation scams to the Treasury Inspector General for Tax Administration on the [IRS Impersonation Scam Reporting](#) webpage. Taxpayers can also call 800.366.4484 to report impersonation scams.
- If your Social Security number (SSN) or individual tax identification number (ITIN) was stolen, immediately report it to [IdentityTheft.gov](#).
- For a comprehensive listing of recent tax scams, consumer alerts and how to report them, visit [Tax Scams/Consumer Alerts](#).

HUMAN SERVICES

The mission of the Human Services and Assistance team is to provide support to seniors, age 60 and older residing in Leavenworth County, to ensure their safety and promote their emotional well-being. This team is qualified to address a single issue or a complex situation that requires the coordination of services, including enlisting the support of our Social Services Representative to assist seniors, who are at risk of institutionalization, to remain living independently for as long as possible.

Social Services and Information & Assistance

The Council on Aging wants to be the first place you call for information regarding aging issues. Our team assists seniors and their families in obtaining needed services and information.

We can offer referrals and information about assistance at home, housing options, caregiver resources, help with forms and applications, coordination of legal services, and assistance with reporting suspected elder abuse, neglect or exploitation.

Senior Health Insurance Counseling for Kansas

SHICK counseling is free, unbiased, confidential and available

to anyone with questions about Medicare. Trained counselors are available statewide to assist with:

- Claims, appeals and fraud
- Prescription drug plans
- Medicare Advantage plans
- Supplemental Insurance (Medigap)
- Medicaid information
- Other health insurance options
- Long-term care options
- Medicare Savings Program
- Extra Help with prescription drug plans

Heart to Heart Transportation

The Heart to Heart Transportation service reunites friends and families by providing transportation for a Leavenworth County resident to visit their family member/friend in

a skilled nursing or memory care facility within a 50 mile radius of Leavenworth.

Vita Tax Assistance Program

The IRS's Volunteer Income Tax Assistance (VITA) and Tax Counseling for the Elderly (TCE) programs offer free basic tax return preparation to qualified individuals.

To qualify, you must:

- be a Leavenworth County resident and
- be 60 years or older with income less than \$67,000 with no farm or rental income.

COA staff and volunteers specialize in questions about pensions and retirement-related issues unique to seniors.

IN-HOME SUPPORT

CHORE ASSISTANCE

This program is designed for qualified homeowners who reside in single-family residences and are unable to perform upkeep or minor home maintenance. Income restrictions apply.

Chore examples include:

- curb to curb trash service
- gutter cleaning (one story homes only)
- minor door repairs (hinges, locks & knobs)
- minor plumbing (garbage disposals, leaky faucets)
- minor stair repairs (replacing boards)
- replacing light bulbs
- shoveling snow
- smoke detector checks and installation

The Chore Assistance Program is a fee-based program. Fees range from \$5-\$15 for most chores and are assessed on a sliding scale based on federal income guidelines.

If the chore requires any materials, the resident will be asked to purchase the materials necessary for the repair, in addition to the program fee.

Call Dawn Owens at 913.684.0786 to see if you qualify for the Chore Program.

ERRAND & SHOPPING SUPPORT

This program supports residents who need assistance with their shopping and errand needs. Council on Aging staff are available to help with any of the following errands:

- grocery shopping
- picking up online shopping orders
- retail store shopping
- post office errands
- picking up prescriptions
- essential business such as appointments at insurance agencies, courthouse, etc.

These programs are fee-based services for residents age 60 and older. Shopping and errand trips may be scheduled every other week, and fees are assessed in the following way:

- \$5.00 for the first errand or shopping trip
- \$1.00 for an additional errand (one additional errand per appointment)

Please call at least 24-48 hours in advance to schedule your errand or shopping appointment.

Call Becky Kellogg at 913.758.6726 to be assessed for the errand and shopping services.

TELEPHONE & IN-HOME VISITING PROGRAM

A trained specialist is available to telephone and/or visit high-risk, older adults who are 60+. This may include individuals who live alone, those who feel isolated or suffer with depression and/or loneliness, and those who are homebound. Services are provided through referrals and upon the request of individuals.

This service offers participants consistent support through positive interactions and assists them with securing access to helpful social services and community resources.

ATTENDANT SERVICE

Attendant Shopping is available for those who may need assistance reaching, reading, or lifting grocery items. The standard shopping fee applies, plus \$1.00.

Attendant Medical: COA staff will help you physically navigate your medical appointments, advocate for you and provide an added layer of support. The standard transportation fee applies, plus \$2.00. For more information, contact Becky Kellogg at 913.758.6726.

LEISURE & LEARNING

The Leisure and Learning (L&L) program offers a variety of activities and classes for seniors residing in Leavenworth County. The L&L Program is made up of two components: an educational program and a social program. The educational program offers various classes, presentations, and trips of interest. The social program offers social events and trips. All activities, programs, and events are open to adults age 50 and older, unless otherwise specified.

RECURRING ACTIVITIES

Bingo: No registration. \$1 at door. Prizes; refreshments served.

Bunco: No registration. \$1 at door. Prizes; refreshments served.

Cardio Drumming: Feel like a rock star while getting a workout. All levels are welcome, and equipment is provided. No registration or fee.

Chairside Yoga: This is a gentle form of yoga that can be done seated or using a chair for balance. This class aims to improve flexibility, balance, and strength while increasing focus and muscle tone. No registration or fee.

Coffee Group: Coffee and conversation. No registration or fee.

Farkle: No registration. \$2 at door. Refreshments served.

Let's Get Sewin': Share ideas while learning new skills and contribute to the community by using provided supplies to make projects for area charities. All skill levels are welcome.

Mahjong: All levels welcome. No registration or weekly cost.

Move & Groove: Come step with the COA! Move to the groove and energize your body. No registration or fee.

Self Defense: Learn how to defend yourself. No registration and or fee

Support Groups: The COA partners with community organizations to host a Caregiver Support Group, *What's Next?* Loss Support Group and our newest addition, Parkinson's Support Group. No registration or fee required.

Ukuleles Unite: Come meet with other local ukulele players who enjoy playing, singing, and learning new songs. All levels welcome. Bring your ukulele!

Vita Band: Use resistance bands for range of motion and strength exercises. Some standing and sitting required. No registration or fee.

Yarn Connection: Learn new skills and have fun with friends. We provide yarn, hooks/needles, patterns, snacks and laughter. No registration or fee.

For our full events and activities calendar, visit our homepage @ **COUNCIL ON AGING (LEAVENWORTHCOUNTY.GOV)**

NUTRITION PROGRAM

NUTRITION PROGRAM

The Nutrition Department's goal is to provide a hot, balanced and nutritious noon-day meal to older adults, age 60 and older, living in Leavenworth County. The Meals on Wheels program is dedicated to meeting nutritional needs, combating social isolation and ensuring safety. Meals on Wheels helps individuals remain independent and at home.

A meal program may be right for you or a loved one.

- Are you 60 years of age or older?
- Do you reside in Leavenworth County?
- Are you experiencing difficulty when trying to complete daily tasks?
- Do you live alone?
- Do you need assistance from others to leave your home?
- Do you find it difficult or are you unable to prepare meals for yourself or others in your home?
- Are you homebound or able to drive?

THERE ARE TWO WAYS TO GET MEALS

Dining Centers

Hot, nutritious meals are served daily at local dining center sites to qualifying participants who are 60 years and older.

Dine in or grab-and-go meals are served daily, Monday–Friday, at mid-morning at each site, with the exception of federal holidays.

Join us for a meal, stay for the fun—bingo, cards, games and socializing!

Four locations are available throughout Leavenworth County

- Bethel AME Church
411 Kiowa Street, Leavenworth
- Trinity Lutheran Church
2101 10th Avenue, Leavenworth
- Basehor United Methodist Church
18660 158th Street, Basehor
- West Haven Baptist Church
1000 West Street, Tonganoxie

Reservations are taken at the dining centers one week in advance.

A \$3.00 per meal donation is appreciated. Meals can be paid for in increments that work for the recipient. Cash, check and PayPal accepted.

Home-Delivered Meals

Hot, nutritious meals are delivered daily to the homes of qualifying homebound participants who are 60 years and older.

Enjoy daily contact with a member of the Council on Aging staff or one of our many Meals on Wheels volunteers. This program ensures family members their loved ones will have a healthy, nutritious meals delivered to their homes, five days per week.

Meals are delivered daily, Monday–Friday, from 10:00 AM–12:30 PM, with the exception of federal holidays.

Participants must be home at the time of delivery. Every effort is made to deliver meals at the same time each day.

The Power of a Knock

A knock at the door might not seem like a big deal to many of us. But, to a homebound senior, it could signal the arrival of the only person they might see all day or all week long. It brings hope. It brings health. It brings the nutrition and care that will completely make their day. A knock from Meals on Wheels means nourishment for the body and soul.

PET SERVICES

Pets become a very important part of our families, even a family member to many. As we age, pets are extremely important to our well-being: they supply companionship, unconditional love and a sense of responsibility. Unfortunately, as people age many find it more difficult to feed and provide the necessary care for their pets due to restricted income and growing health issues. Due to lack of funds, many recipients of Meals on Wheels share their lunch with their pet(s) or forgo necessary veterinary care.

The Council on Aging's **Pets and Loving Seniors (PALS)** and **Pet2Vet** programs are designed to provide older adults experiencing financial challenges with pet food and both proactive and reactive veterinary care to ensure they are able to care for their pets for as long as possible.



PETS AND LOVING SENIORS - PALS

PALS is designed to assist qualifying clients' pets by providing them with supplemental pet food and supplies. Program participants are primarily referred to PALS staff by COA staff members; however, clients may self-refer.

PALS Eligibility Guidelines

To qualify for our PALS program, a client must be over the age of 60 with a total income under 150% of the Federal Poverty Guidelines for the current year. Preference will be given to homebound clients.

All pets must be owned by the client and must be spayed or neutered. If the pet is not spayed or neutered, these services will be provided by an aligned Pet2Vet veterinary clinic.

The COA will supplement pet food and supplies for qualifying clients' pets, up to two pets per client. All products are subject to available funding and pet food donations.

PET2VET PROGRAM

Pet2Vet is designed to assist qualifying clients' pets with subsidized veterinary care, as well as transportation to veterinary or grooming appointments.

Pet2Vet Eligibility Guidelines

All clients, who qualify for the PALS program, are automatically eligible for the Pet2Vet program. Homebound clients, regardless of income, will be eligible for transport to veterinary care/grooming appointments. A fee may apply.

Pet Guidelines

Pets will be assessed in person regarding their ability to be transported by Council on Aging staff prior to any scheduled appointments. Pets must exhibit a calm demeanor, follow basic commands, and be crated if at all possible.

Pet2Vet Fees

There is a \$5.00 per round trip fee to veterinary/grooming appointments. Transportation is provided at no cost to clients who qualify for the PALS program and/or whose income level is 150% or below the federal poverty guidelines.

Each client requesting transportation for their pet for Pet2Vet services will be required to have a Release of Liability form on file at the COA.

If the client's pet does not already have an aligned veterinarian, services will be provided by one of the Pet2Vet program's aligned veterinary partners.

TRANSPORTATION

SENIOR EXPRESS TRANSPORTATION

Who Is Eligible?

Leavenworth County residents, age 50 and older, as well as residents of any age with a disability.

Is There a Fee?

Senior Express is a fee-for-service program.

- **\$2.50** per one-way trip within Leavenworth County, including drive-thru business trips
- **\$10.00** per one-way medical trip to the Parallel Parkway Corridor, including Providence Medical Center and The Legends-area medical plazas
- **\$15.00** per one-way, out-of-County medical trip within a 50-mile radius of Leavenworth.

Trip fees are due at the time of pick up. Exact fee is required, as the driver cannot make change. Cash and checks are accepted.

What Area is Serviced?

Transportation is provided throughout Leavenworth County.

Out-of-County trips (within a 50 mile radius) are available for seniors, for medical purposes only. Transport is available to Atchison, the Kansas City metropolitan area, Olathe, Liberty, Independence, Lawrence, Bonner Springs, Desoto and St. Joseph.

Shared Ride Service

We are a shared ride service. Other riders may be riding on your trip. The driver will pick each rider up and take them to their destination. Please plan your travel time accordingly.

Reservations are required.

**Call the Dispatch Desk:
(913) 684-0778
(913) 684-0808**

Reservations

Reservations are taken on a first-call, first served basis and subject to availability. Local trips may be booked up to 2 weeks in advance. Out-of-County trips may be booked up to 2 months in advance.

Reservations are taken on a first-call, first-served basis and limited to availability.

Cancellations/No Shows:

Please call at least 2 hours before your scheduled pickup to cancel your trip. Failure to cancel in advance or not show up for rides 3 or more times in a 30 day period, may result in imposition of the trip fee and/or denial of service for up to 3 months.

SCHEDULE A RIDE

To schedule a ride, call (913) 684-0778 or (913) 684-0808 and provide the following information:

- your full name
- telephone number
- date and time you wish to travel.
- street address for pick up
- name and street address of your destination
- special needs you have (wheelchair, cane, service animal, etc.)
- if you will be traveling with an attendant (16 years and older)
- if it is a medical trip, please provide the appointment time, as well as the name and telephone number of the doctor or clinic you are visiting

When you are finished with your business, please call the Dispatch Desk for your return trip. All return trip calls must be made by 3:00 p.m. If you are not ready by 3:00 p.m. you will need to find other arrangements for a return trip.

We provide curb-to-curb service throughout Leavenworth County.

- DO YOU HAVE DIABETES?
- WANT TO MAKE THE BEST CHOICES FOR YOUR HEALTH?

WE CAN HELP...

Dining with Diabetes

FAMILY AND CONSUMER SCIENCES

Date: February 2025

Time: 10am to Noon (each session)

Location: Council on Aging
711 Marshal Street, Suite 100
Leavenworth, KS 66048

Nutrition and physical activity are keys to managing your type 2 diabetes, but where do you start? The *Dining with Diabetes* program can help!

Designed especially for people with type 2 diabetes, this program will help you learn the skills needed to promote good health.

Dining with Diabetes is taught by trained and caring educators. The program includes:

- planning meals and snacks with delicious and healthy recipes
- cooking demonstrations and food sampling
- motivation and support — connect with others who are living with diabetes
- ideas for being more active
- an understanding of how diabetes affects your overall health

FOUR SESSIONS:

Tuesday, February 4th
Tuesday, February 11th
Tuesday, February 18th
Tuesday, February 25th

INSTRUCTOR:

Anita Muniz-GrandPre
KSRE FACS Extension Agent
913-364-5700
amunizg@ksu.edu

REGISTRATION:

Jessica Pontbriant
COA Human Services Coordinator
913-684-0777
JPontbriant@leavenworthcounty.gov

COST:

\$25 per participant (Cash or Check)
Checks made out to LVCO Extension

For more information visit

k-state.edu/diningwithdiabetes

K-STATE
Research and Extension



Kansas State University Agricultural Experiment Station and Cooperative Extension Service.
K-State Research and Extension is an equal opportunity provider and employer.

Is your New Year resolution to volunteer in 2025?

VOLUNTEER WITH LEAVENWORTH COUNTY

Tis the season ...for Community Service

- Do you have 90 minutes during the week? (late morning)
- Do you like meeting new people?
- Do you want to help those in our community?
- Do you drive?

If you would like to be a Meals on Wheels volunteer, contact Dawn Owens at the *Council on Aging*.

Phone: 913.684.0786

Email dowens@leavenworthcounty.gov



Want to donate to the Leavenworth Meals on Wheels Program?

Stop by the COA or call our office to find out how you can help!

SUPPORT GROUPS AT THE COA

**2nd & 4th
Tuesday
10-11am**

WHAT'S NEXT? LOSS SUPPORT GROUP

For adults 50 and better. No sign up necessary.

**2nd
Wednesday
1-2pm**

CAREGIVER SUPPORT GROUP

For caregivers of all ages. No sign up necessary.

**4th
Tuesday
1-2pm**

PARKINSON'S SUPPORT GROUP

For caregiver's of all ages. No sign up necessary.

NEW AT THE COA

DEMENTIA SUPPORT GROUP 4th Thursday of the Month

1:00-2:00pm

Facilitated by Ashley Dill with NOVUS LifeCare Home Health & Hospice. For residents of all ages and no registration necessary.

**FIRST GROUP WILL BE ON
JANUARY 23, 2025**

GENERAL ENROLLMENT RUNS JANUARY 1 THROUGH MARCH 31

- You can sign up for Part B during General Enrollment Period if you missed your Initial Enrollment Period and don't qualify for a Special Enrollment Period. You can also buy Part A during this time if you don't qualify for premium-free Part A and missed your Initial Enrollment Period. **You may have to pay a higher Part A and/or Part B premium for late enrollment.**
- If you're in a Medicare Advantage Plan, you can change to a different Medicare Advantage Plan or switch to Original Medicare (and join a separate Medicare drug plan) once during this time. Any changes you make will be effective the first day of the month after the plan gets your request.

You can explore Medicare coverage options by:

- ⇒ Going to www.medicare.gov - Find health & drug plans
- ⇒ Calling 1-800-MEDICARE (1.800.633.4227) and speaking to a real person. TTY users can call 1.877.486.2048.
- ⇒ Making an appointment with a Senior Health Insurance Counseling for Kansas (SHICK) counselor. To schedule an appointment, call the COA at 913.684.0777.





To be added to our email distribution list, please contact us @seniors1st@leavenworthcounty.gov



For our full events and activities calendar, visit our homepage @[Council on Aging](https://www.councilonaging.org)



FOLLOW US ON
FACEBOOK



CLICK HERE TO BE DIRECTED TO OUR PAGE.

AGING RESOURCES

- Adult Protective Services.....1.800.922.5330
- Emergency Respite:
 - Country Care.....913.773.5517
 - Medical Lodge.....913.772.1844
- Guidance Center.....913.682.5118
- Kansas Aging and Disability Resource Center
 -855.200.2372
- Leavenworth County Health Department
 -913.250.2000
- Medicare 1.800.633.4227
- Poison Control Center.....1.800.222.1222
- Property Fraud LV County.....1.913.684.0424
- Social Security Office1.800.772.1213
- Wyandotte/Leavenworth Area Agency on Aging
 - 913.573.8531

To best accommodate all of our clients, the COA is set to take payments and donations online through **PayPal**.

Scan the QR code or in PayPal search for **Leavenworth County Council on Aging** or use **@LVCOA**



Some services are funded in part by the Older Americans Act and are provided without discrimination on the basis of race, color, religion, national origins or sex. If you feel that you have been discriminated against, you have the right to file a complaint with the Area Agency on Aging @ 1.888.661.1444

This informational brochure is published by:
Leavenworth County Council on Aging

Editor: Jessica Pontbriant

Director: Connie Harmon

Email: seniors1st@leavenworthcounty.gov

Website: [Council on Aging \(leavenworthcounty.gov\)](https://www.councilonaging.org)



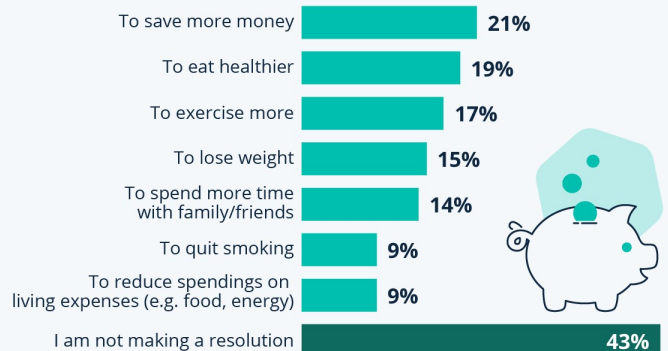
I DON'T CALL THEM
NEW YEAR'S RESOLUTIONS.

I PREFER THE TERM:
CASUAL PROMISES
TO MYSELF THAT
I AM UNDER NO LEGAL
OBLIGATION TO FULFILL



America's Top New Year's Resolutions for 2025

Share of U.S. adults who have made the following New Year's resolutions for 2025



Multiple selection out of 15 answers possible
1,050 U.S. respondents (18 - 80 y/o) surveyed Oct. 24 - Nov. 03, 2024
Source: Statista Consumer Insights



Have feedback or suggestions about the COA's programs and services?

You can reach us by:

Email - seniors1st@leavenworthcounty.gov

Drop box - Located in the COA's reception area.

Call - Connie Harmon at 913.684.0784.